







The client's family owns this land in this residential district over 100 years. Their successive houses have always been attractive in this town. When the client decided to replace the last house made of wood with a new apartment building made of reinforced concrete structures, the client naturally hoped it will be a design which contributes to the townscape as the previous houses had done on this site. The previous houses shared an unceasing inspiration and developed a tradition of using red bricks for the boundary walls and having a beautiful Japanese garden. We decided to continue the tradition and contribute our work to the history of the site.





The two approaches are made of red bricks. The inspiration came from the existed garden with beautiful moss at the north corner of the site. The moss garden is noticeable from the street. While approaching towards the entrance one may catch the tranquil beauty by eyes and feel a moment of peace by a sense. The building walls are finished with thin white tiles. A small scale of the tiles on the large walls draws an impression fit appropriately to the scale of the street in this residential district. It results in the impression of this building rather a large singular residence than a typical apartment building. The exterior lighting at night is modest and constrained in order to make a mood that keeps a high quality and blends

well into the atmosphere of the street. Each entrance of all the apartment units is connected to what we call 'open room.' The 'open rooms' have windows to get the natural light and ventilation from the outside. For some of the windows are not covered with glass, the 'open rooms' are ambiguous by exploring spatial relationships between the interior and the exterior. It is a free space for its inhabitant to play around. Spatial continuity is made between the 'open room' and the living room by applying a same kind of finishes respectively to the floor, the walls and the ceiling. There are various sizes and shapes of the 'open rooms.'

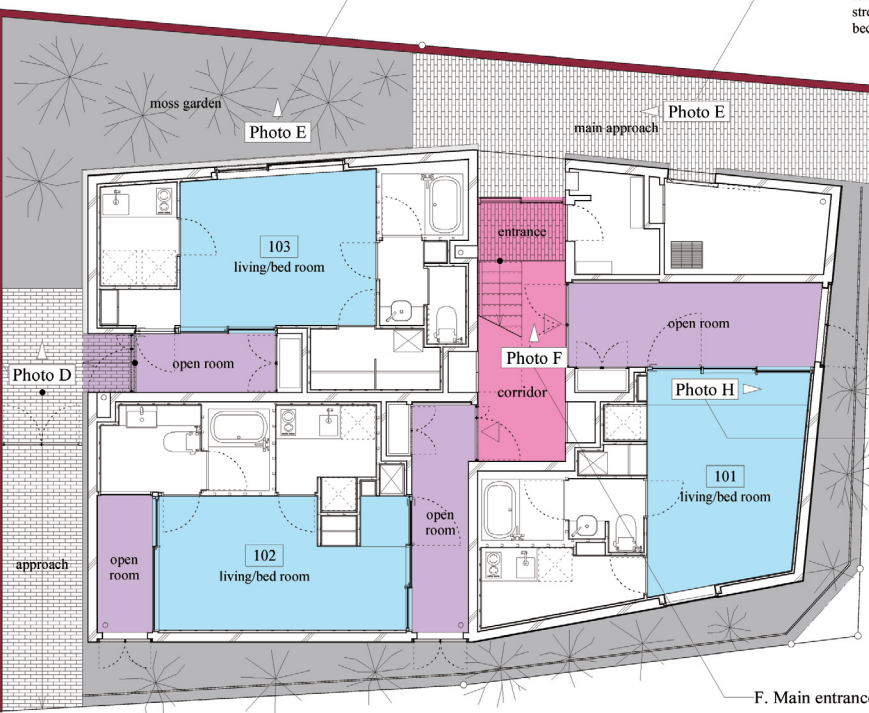




#### D. Approach for the relative of the client

The approach for the apartment of the clients relative. The previous houses on this site had a continuous inspiration of using bricks from the houses that stood on the site before, we therefore decided to continue this tradition. The last wooden house had the brick boundary walls and the approach floor inspired from the previous brick house. The Japanese garden with beautiful moss contrasted with the red bricks is inspired from the garden in the previous wooden house. This moss garden is continued through into the main approach.

Approach for the apartment of the clients relative.



#### E. Main approach and moss garden

The approach for all the apartments in this building, except for the apartment of the clients relative. It has a beautiful moss garden at the far end, the garden is continued to the approach of the apartment of the clients relative. The moss garden is visible from the street so that the people can enjoy it, this approach becomes an attractive viewpoint from the street.

The approach for all the apartments in this building, except for the apartment of the clients relative.

Photo A South facade

#### H. Apartment no. 101 and 'open room' on the ground floor

The 'open room' has a ceiling and walls with windows without glass, it seems like both an interior and exterior space, a free space for the inhabitant. Spatial continuity is made by using the same finishes for the floor, wall and ceilings between the 'open-room' and living space.

#### F. Main entrance towards the approach

The main entrance of this apartment building. The brick floor of the approach continues to the inside of the entrance. This idea is also inspired from the previous wooden house that has a similar composition of the approach and entrance finished by bricks.

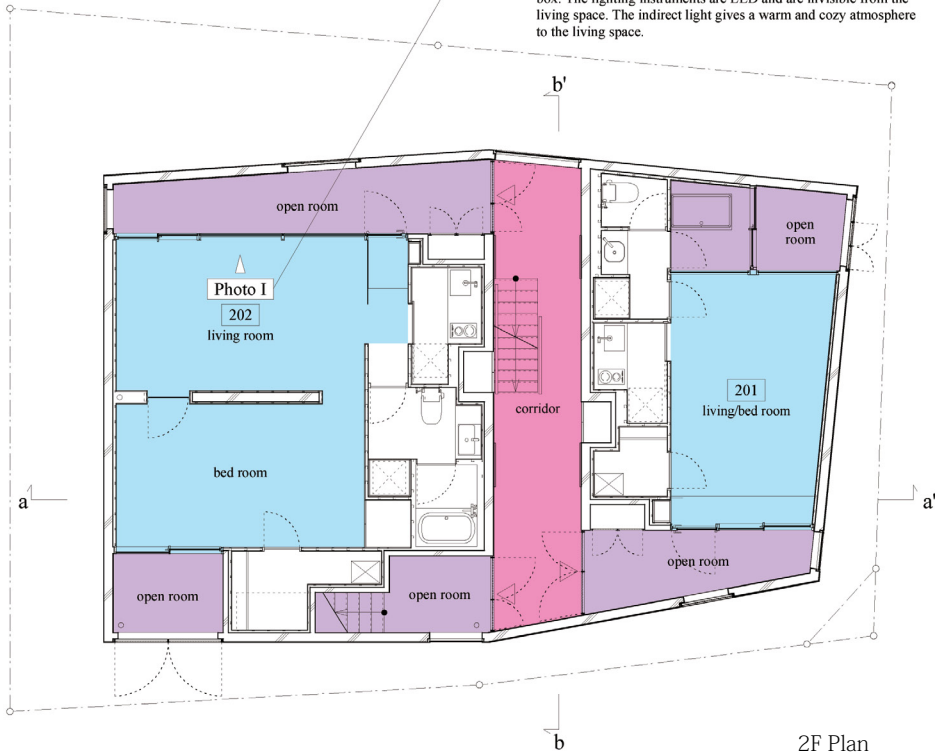
Photo C South west facade

Photo B West facade



# I. 'Open room' as the lighting box for the living space

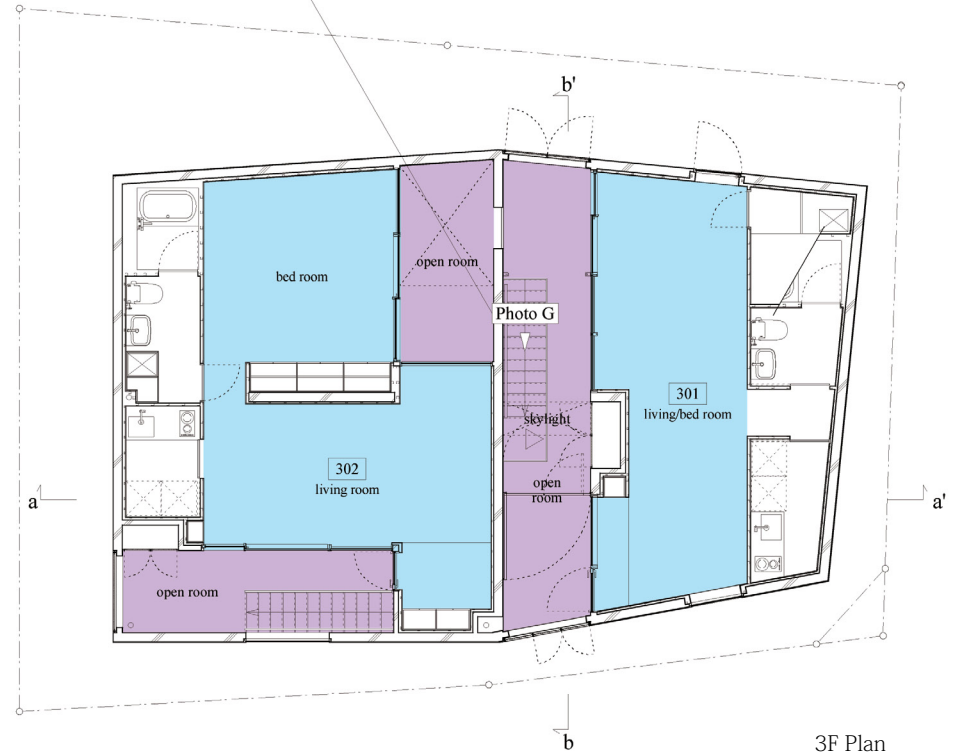
The 'open room' from the living space of apartment no.202. As well as all the other apartments, the lighting has not been set within the living space, but instead, the 'open room' itself works as a lighting box. The lighting instruments are LED and are invisible from the living space. The indirect light gives a warm and cozy atmosphere to the living space.



2F Plan

# G. Entry to an apartment on the 3rd floor

The entry for apartment no.301. This is connected first to the 'open room' of the apartment. The 'open room' has a sky light with glass and windows on the exterior wall without glass.

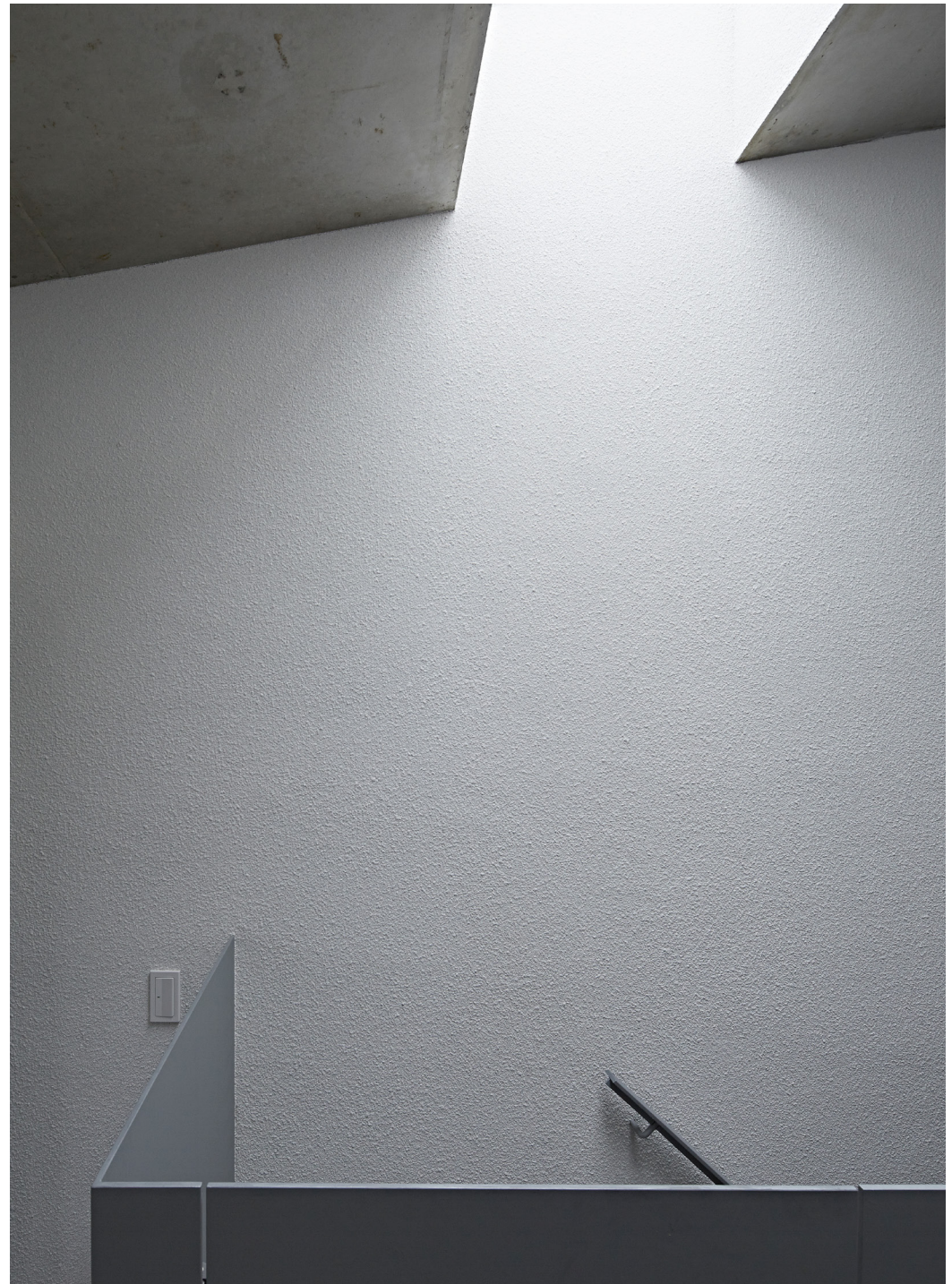


3F Plan

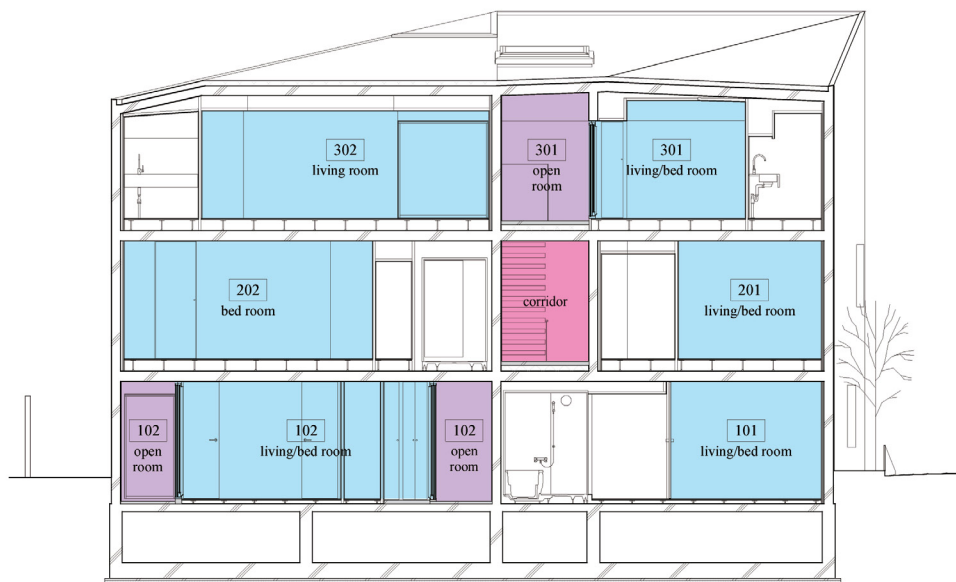




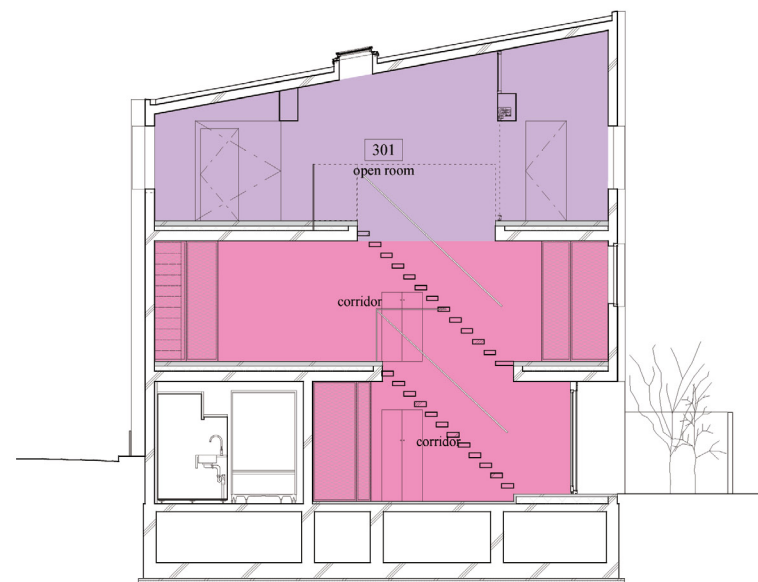








a-a' section



b-b' section



Lighting fixtures have not been installed in the living space, but instead the 'open rooms' work as lighting boxes. LED is used with the lighting fixtures in the 'open room' and they are invisible from the living space. The indirect light draws a warm and cozy atmosphere into the living rooms.

#### PROJECT DATA

|                    |   |
|--------------------|---|
| -Project name:     | oggi  |
| -Building type:    | Apartment building                                    |
| -Structure:        | Reinforced concrete building of three stories         |
| -Location:         | Tokyo, Japan  |
| -Site area:        | 212.11 sqm  |
| -Total floor area: | 377.55 sqm  |
| -First floor:      | 125.85 sqm  |
| -Second floor:     | 125.85 sqm  |
| -Third floor:      | 125.85 sqm  |
| -Materials:        | Expanded metal panels, Mirrored glass, and Red Bricks |
| -Completion:       | 2013  |

